



MARION INSTITUTE

Advancing a Culture of Health Through Food Equity

CONNECTOR
SERIES

FROGFOOT FARM
NEIGHBORS FEEDING
NEIGHBORS

GROW
EDUCATION

SOUTHCOAST
FOOD POLICY COUNCIL

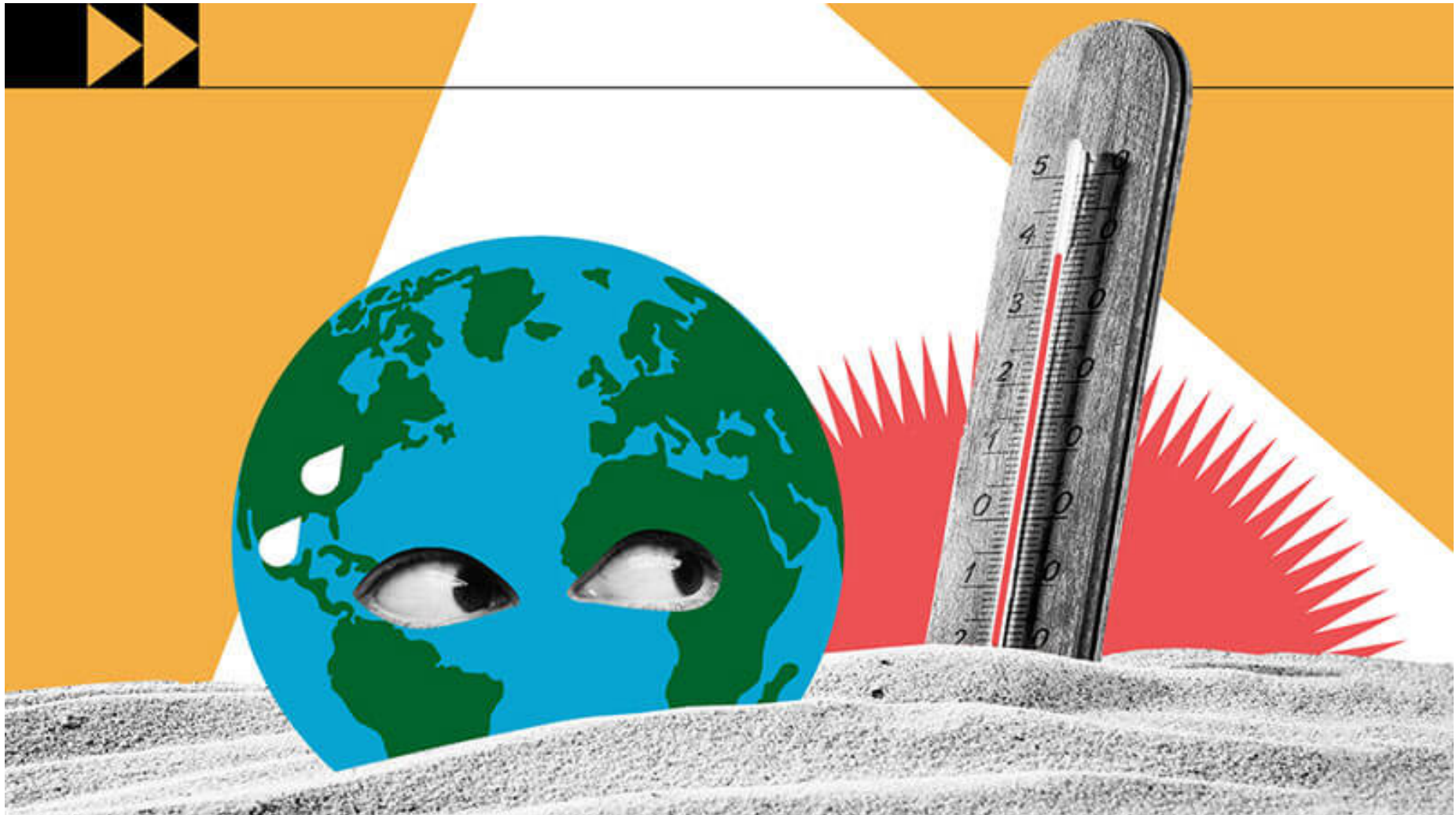
BIOMED
PROGRAMS

GREENHOUSE
INITIATIVES

Climate Change



MARION
INSTITUTE



Relationship to the land



MARION
INSTITUTE



Frogfoot Farm

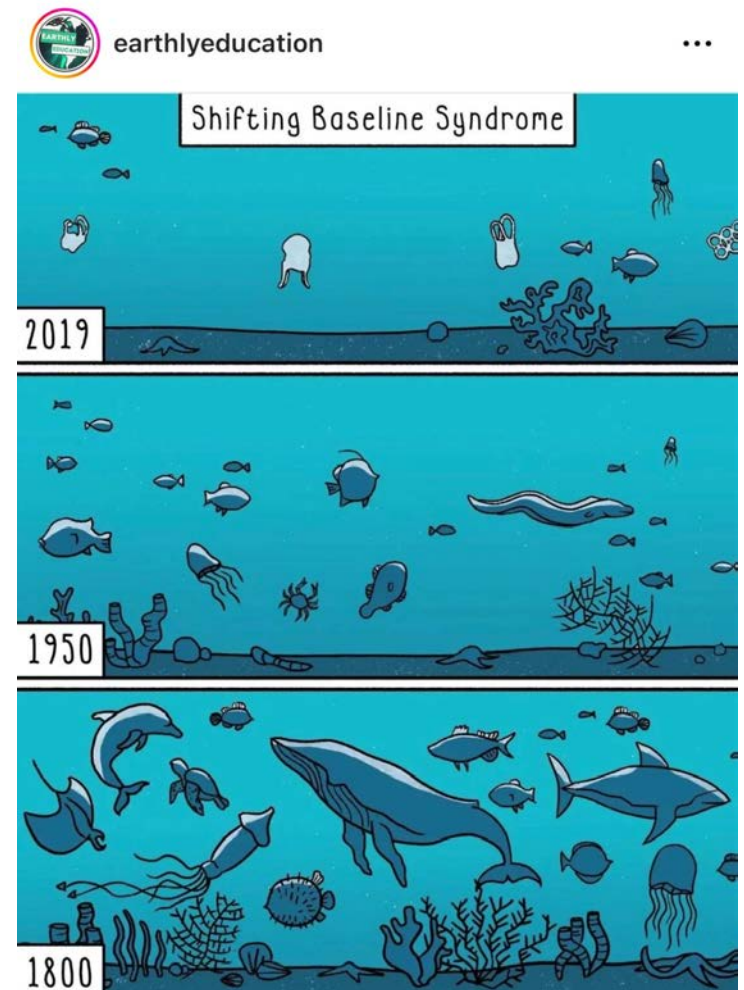
- GROWING
- GLEANING
- VOLUNTEER-DRIVEN



Climate Change in the backyard

Shifting Baseline is the gradual change in our accepted norms and expectations for the environment across generations. Our tolerance for environmental degradation increases and our expectations for the natural world are lowered.

- National Parks Service definition



Shifting our Relationship



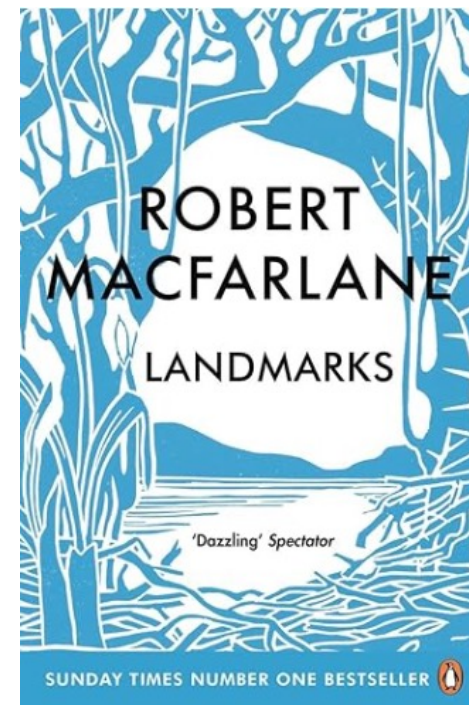
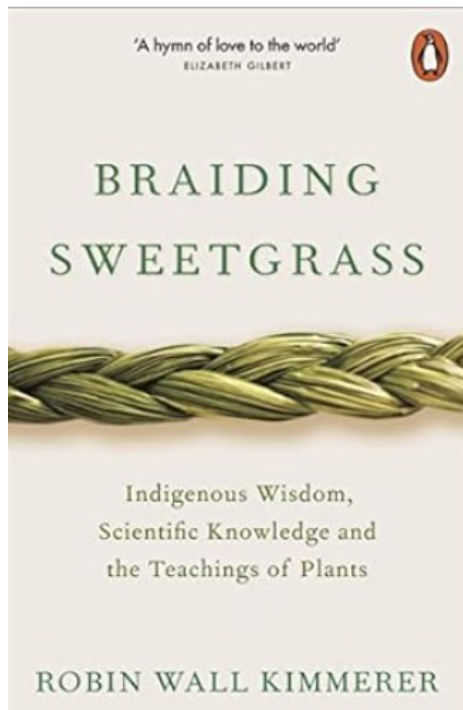
1. Observation

“Paying attention is a form of reciprocity with the living world, receiving the gifts with open eyes and heart”

– **Robin Wall Kimmerer**,
author of ‘Braiding Sweetgrass’

Shifting our Relationship

1. Observation



Shifting our Relationship



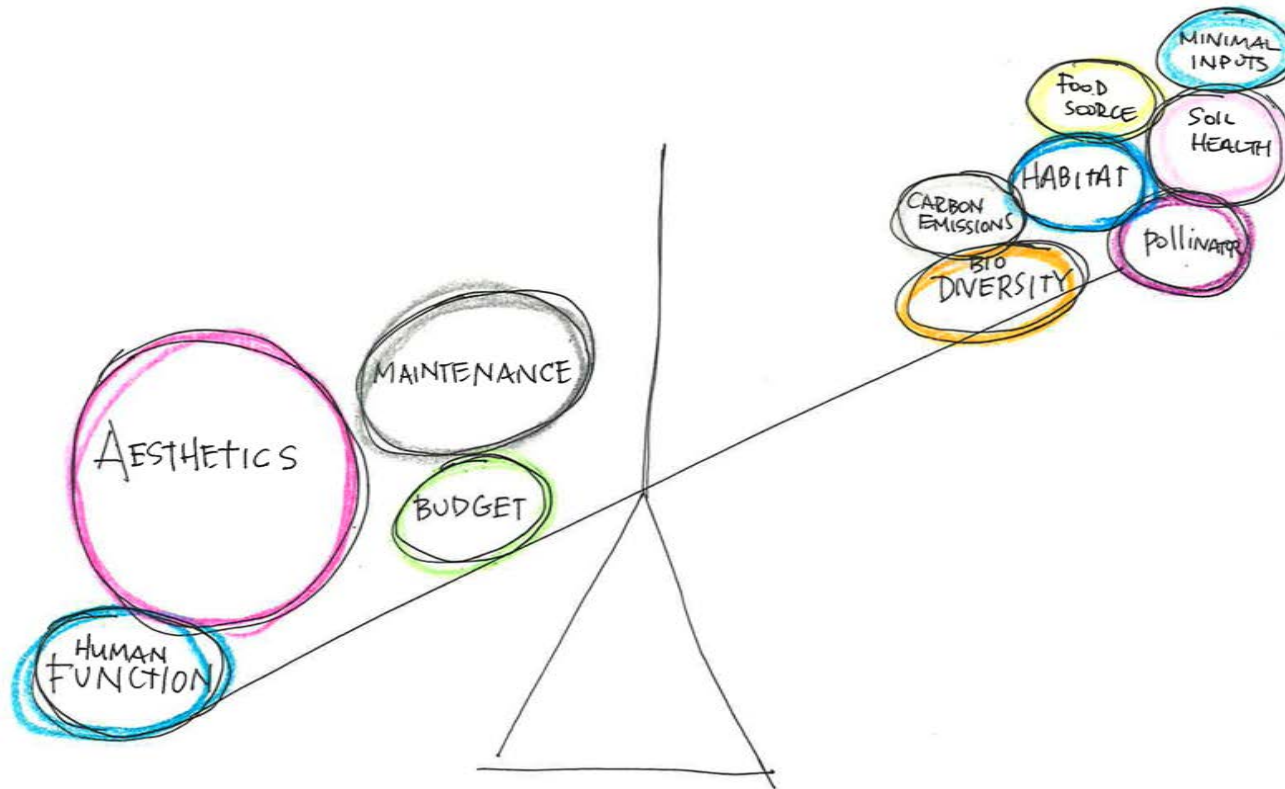
2. Time

'Roots, Shoots, Grows'



Shifting our Relationship

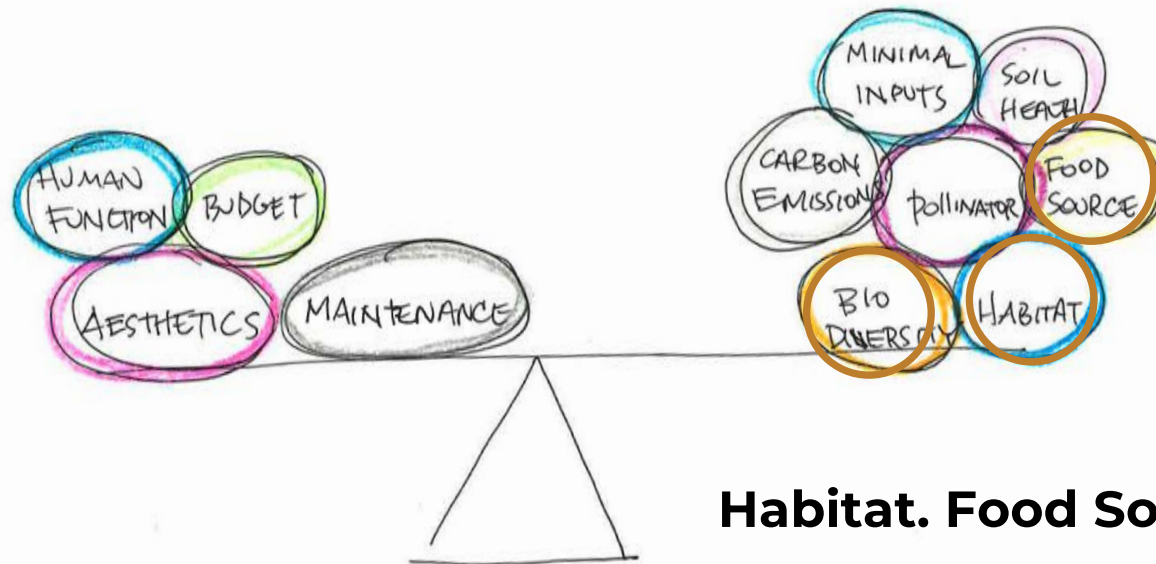
3. Shifting our Priorities





Shifting our Relationship

3. Shifting our Priorities



Shifting our Relationship



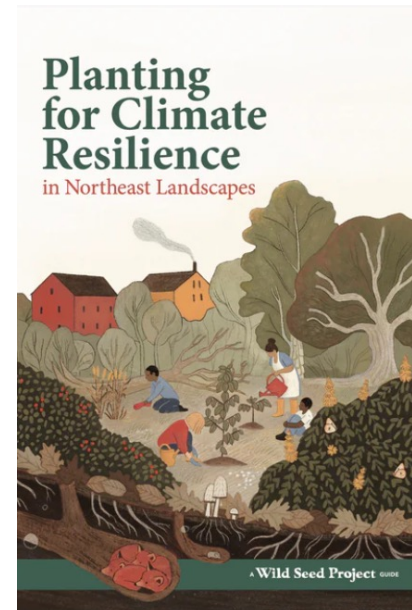
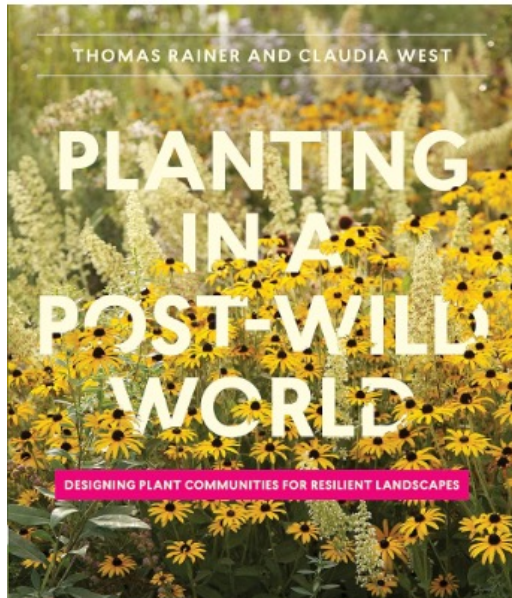
MARION
INSTITUTE

3. Shifting our Priorities



Shifting our Relationship

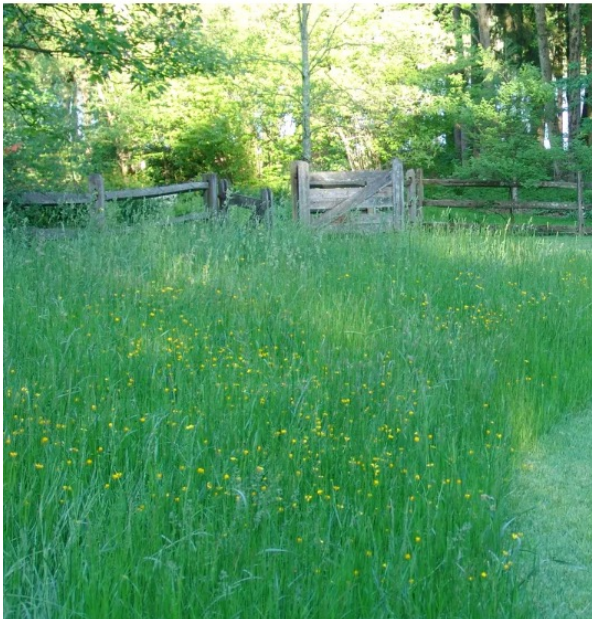
3. Shifting Priorities





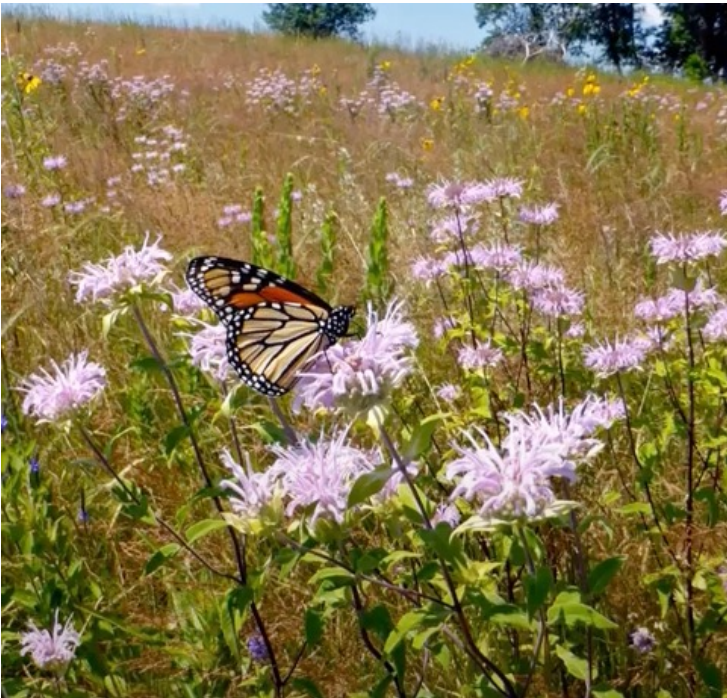
Where to Start

1. Minimize lawn



Where to Start

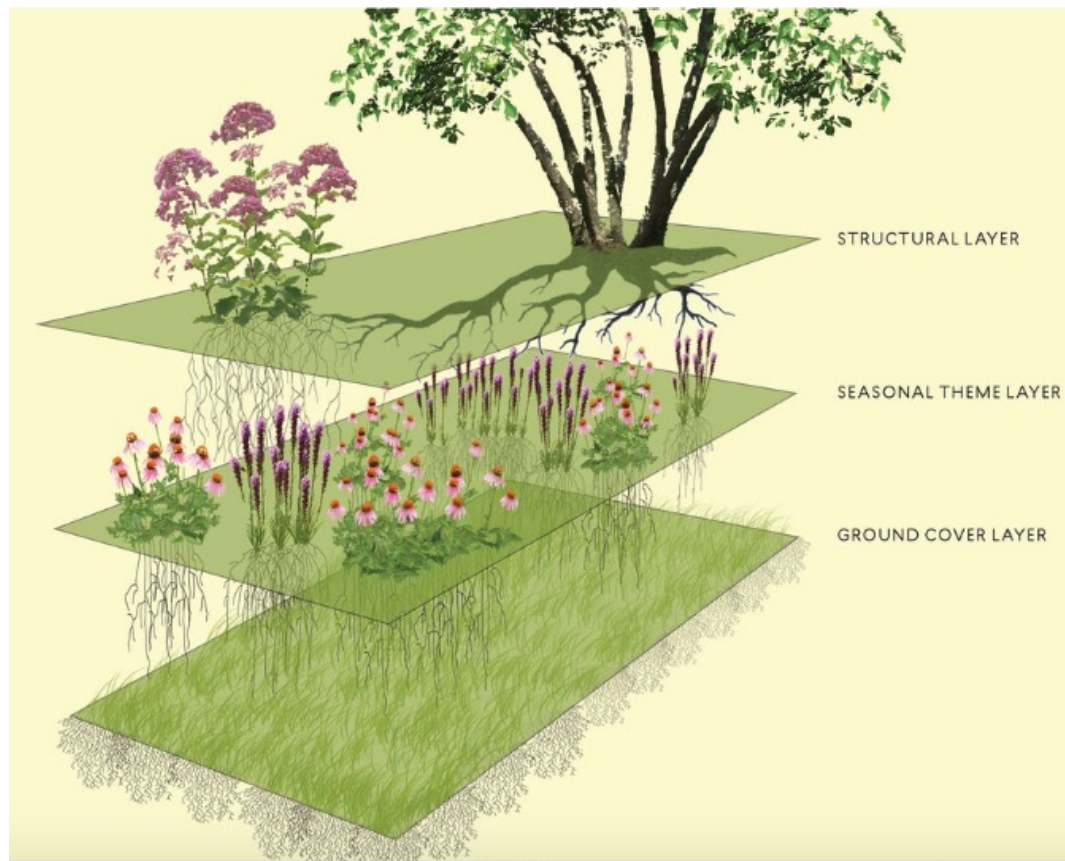
2. Plant Native Plants



Even just one makes a difference...

Where to Start

3. Plant in Layers



Where to Start

4. FOCUS ON SOIL



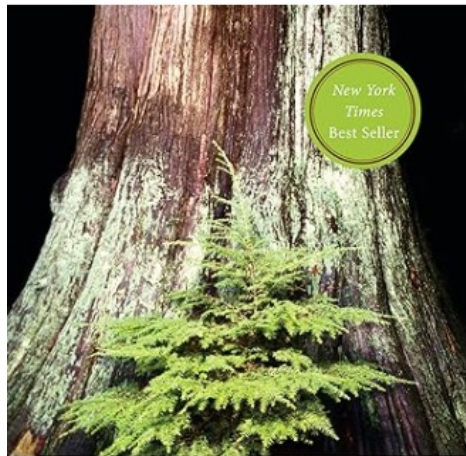
Know It, Cover It, Build It Up

“The soil is the great connector of our lives, the source and destination of all.”

--- *Wendell Berry, The Unsettling of America, 1977*

Shifting our Relationship

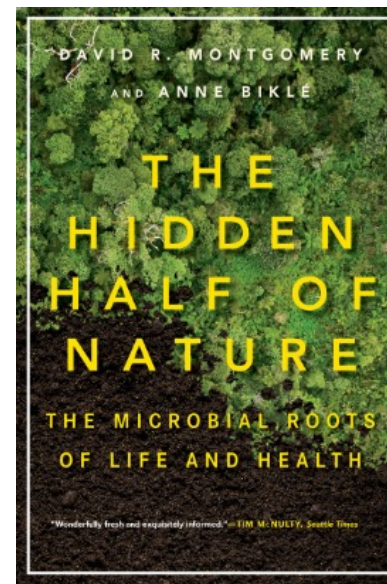
4. Focus on Soil



FINDING THE MOTHER TREE

Discovering the
Wisdom of the Forest

SUZANNE SIMARD



Basic Tips

- 1. Know your soil**
- 2. Cover your soil**
- 3. Start Small**
- 4. Right Plant, Right Place**
- 5. Source Mindfully**
- 6. Think of a MONET**
- 7. Maintain for Habitat
and Food Source**

Basic Tips

Ground Nesting



Stem/Wood Nesting



Cavity Nesting



Lastly,

Observe,

Be Patient,

Let go of a little control and

GET READY TO BE UNCOMFORTABLE

In Practice



MARION
INSTITUTE



In Practice



MARION
INSTITUTE



In Practice



MARION
INSTITUTE



In Practice



MARION
INSTITUTE



In Practice



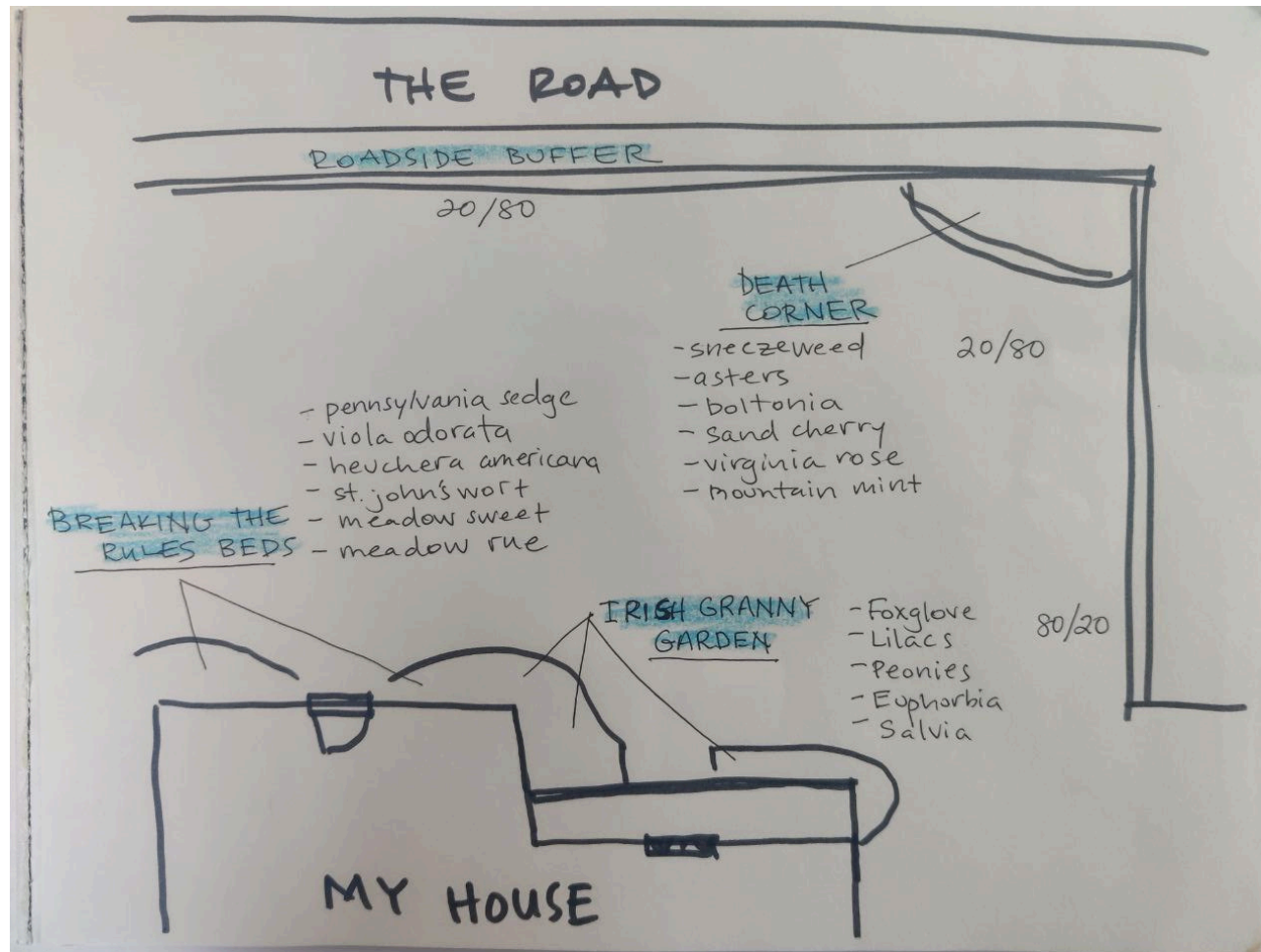
MARION
INSTITUTE



In Practice



MARION
INSTITUTE



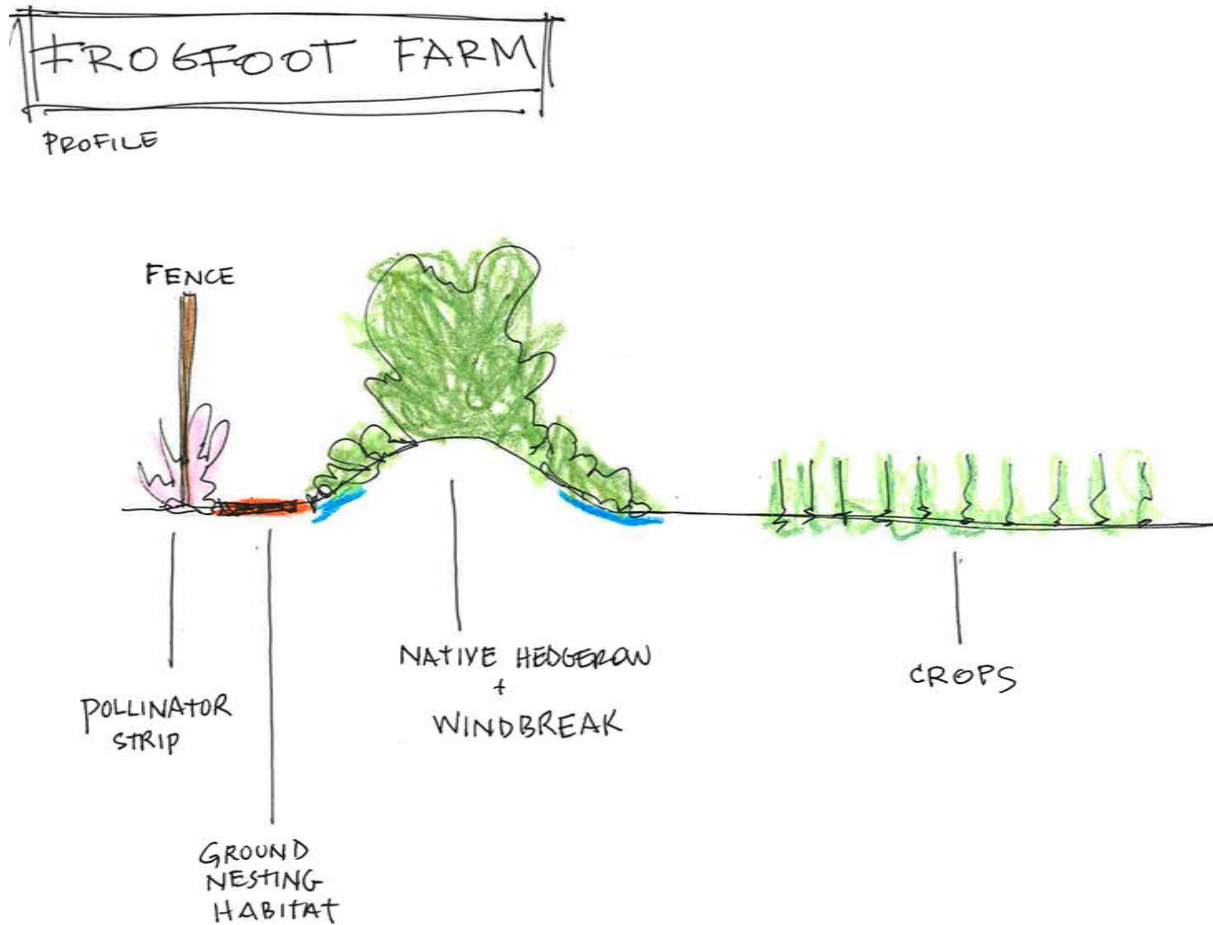
In Practice



MARION
INSTITUTE

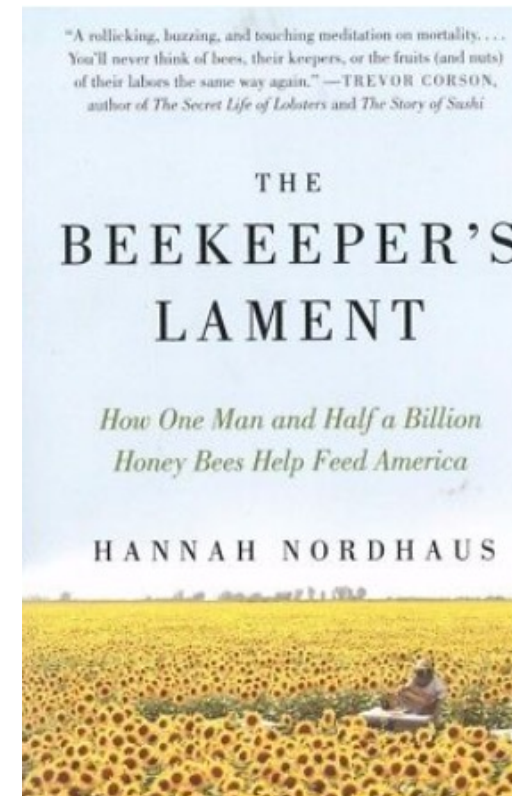
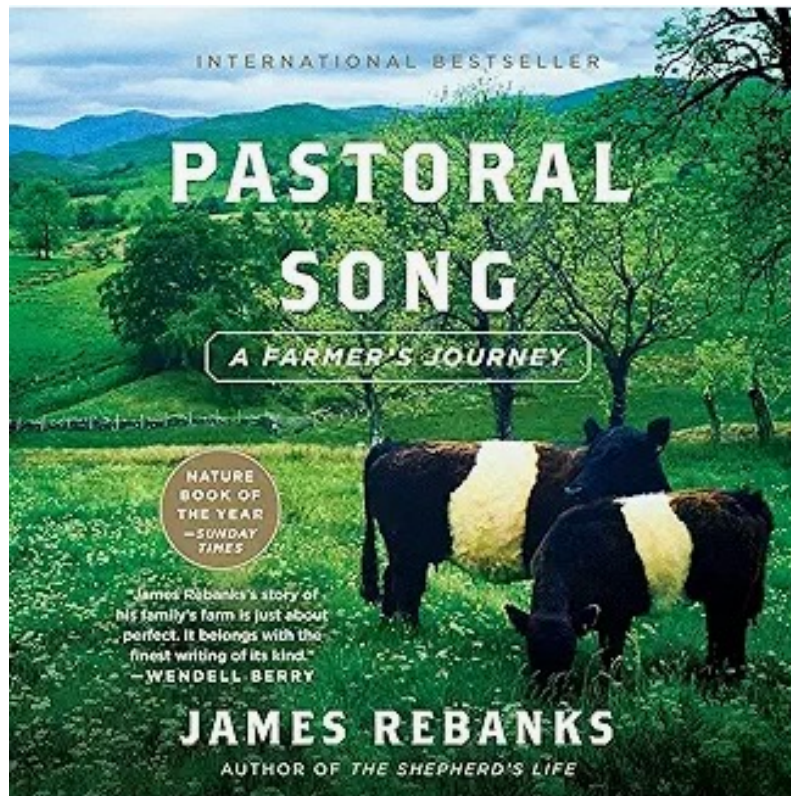


In Practice



Shifting our Relationship

Farming with nature



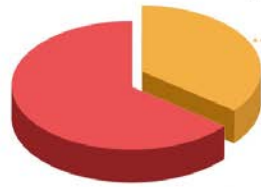


Back to the Big Picture: Climate Change



FAST FACTS *Climate action and nature*

Healthy ecosystems
can absorb up to



a third
of carbon emissions

Source: UNFCCC





Back to the Big Picture: Climate Change

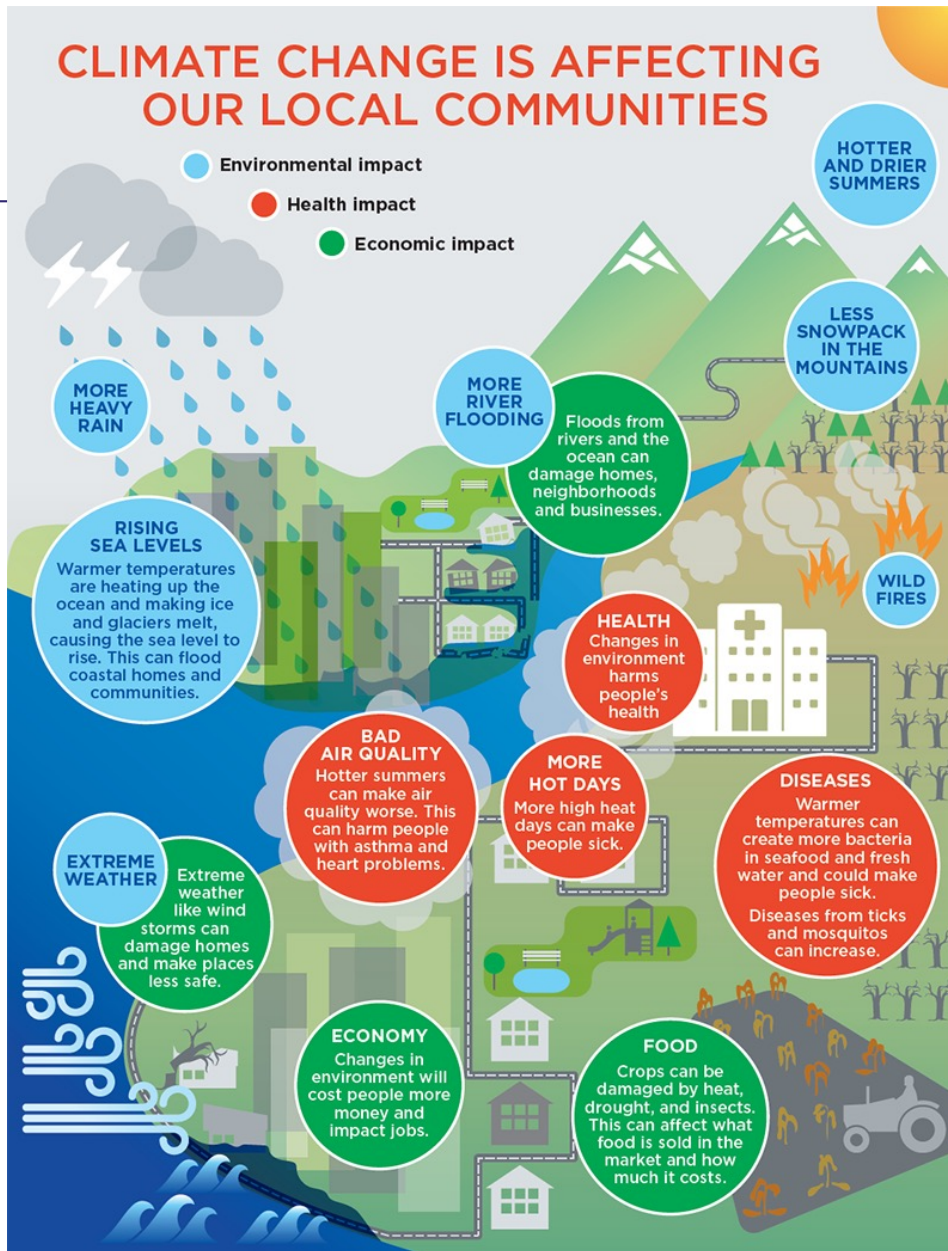
Resiliency: The ability to prepare for,
recover from, and adapt



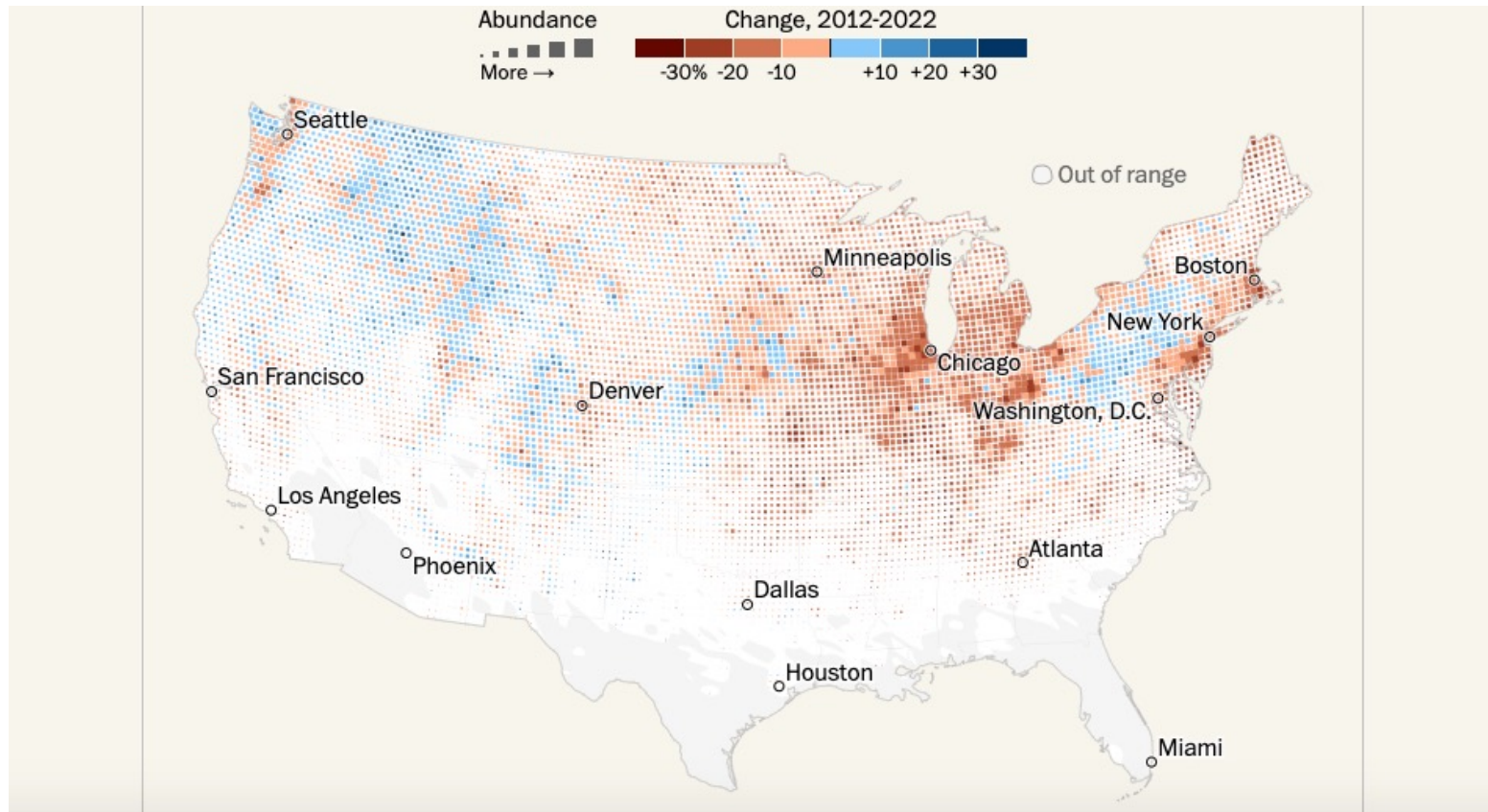
Individual Health

Community Health

Ecosystem Health



It All Matters

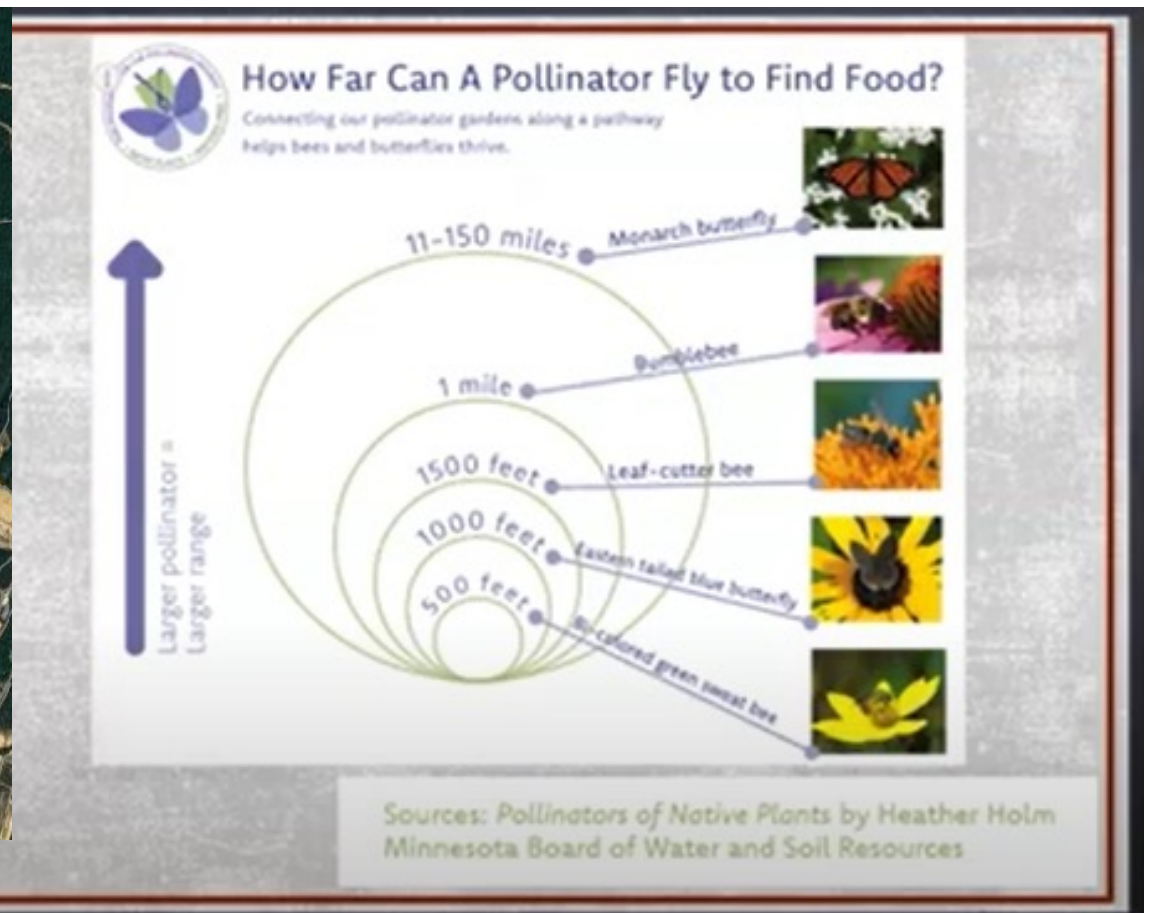
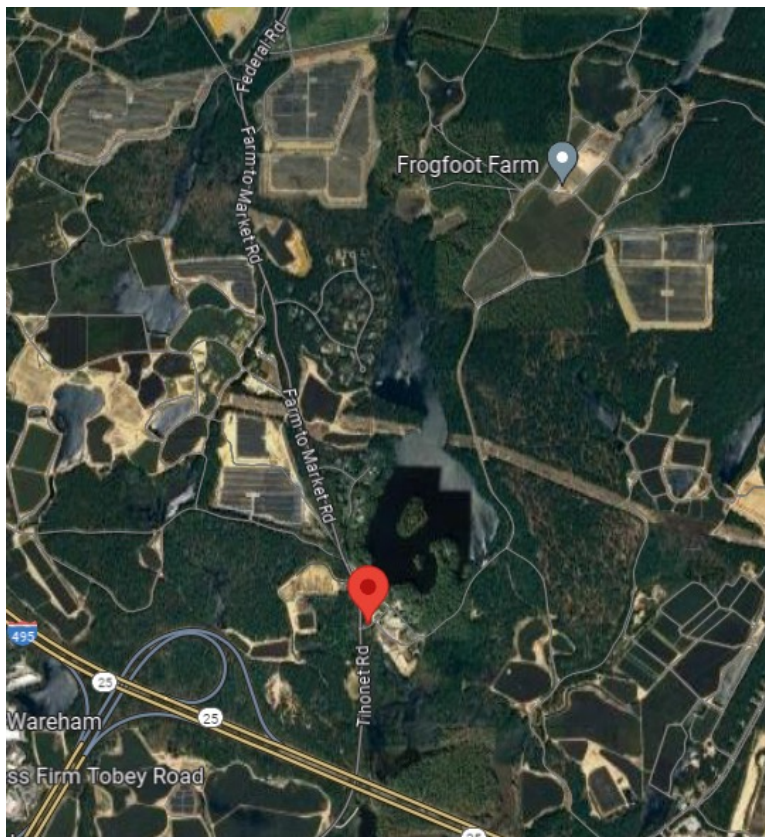


Habitat Fragmentation

It All Matters



MARION
INSTITUTE

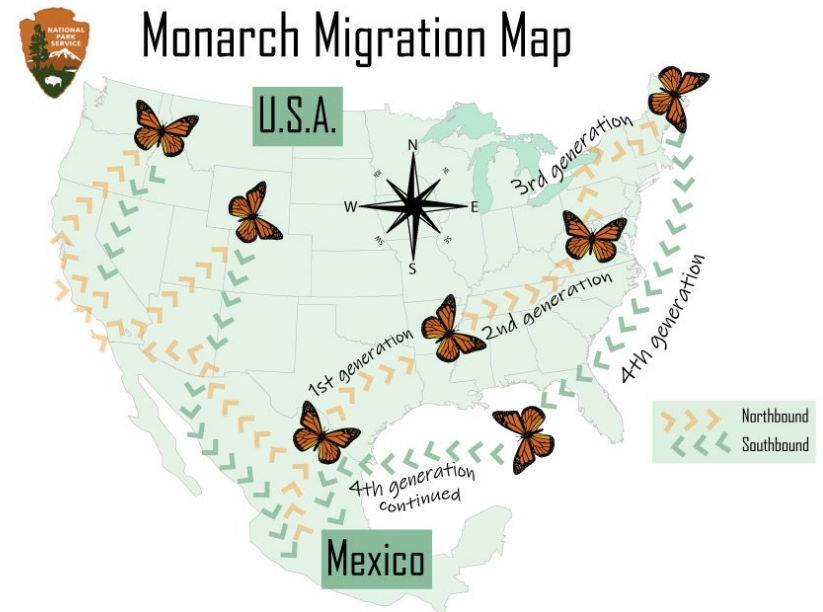
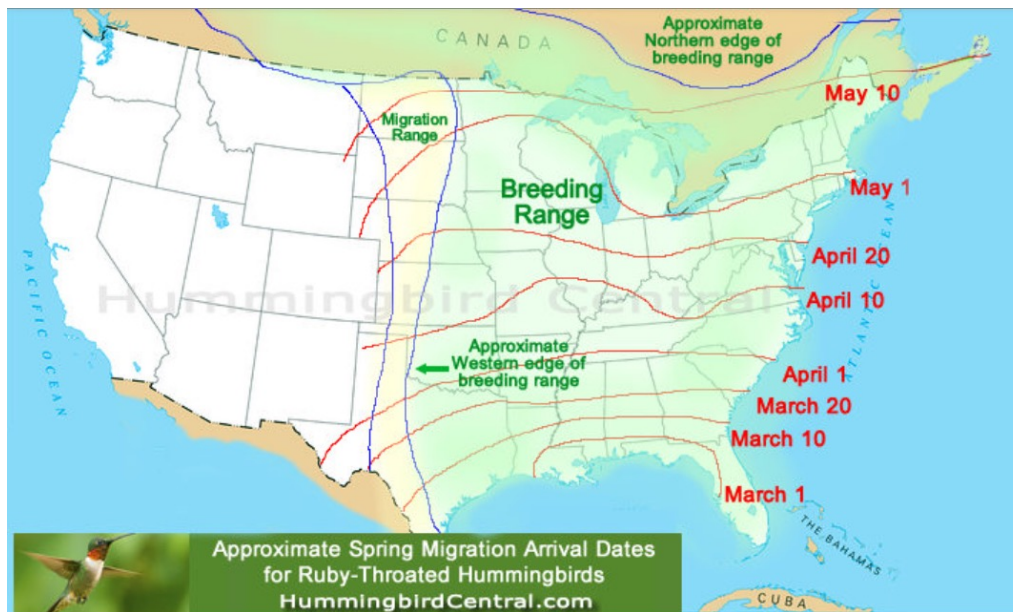


Pollinator Pathways



It All Matters

“even the upper end of the river believes in the ocean” – William Stafford



Gardening for Climate Change



1. Observe
2. Be Patient
3. Prioritize Habitat and Food Sources
4. Minimize your effort + inputs
5. Make your garden a MacGyver Garden

“even the upper end of the river believes in the ocean” – William Stafford

Resources

General

Grow Native Massachusetts
Berkshire Botanical Garden
Xerces Society
NOFA CT – Ecotype 59 Project
Landscape Interactions
University of Rhode Island

Nurseries + Seed Sources

Butterfly Effect Farm – Westport, MA
Bluestem Natives Nursery – Norwell, MA
Wild Seed Project – Maine
Prickly Ed's – Seekonk, MA

Inspiration

Doug Tallamy
Nigel Dunnett
Piet Oudolf
Heather Holm
Rebecca McMackin

